



What is new?

ELPRO has added an additional product to the successful ECOLOG-NET datalogger series to expand the possibilities of the central monitoring network based on LAN / WLAN.

For the Central Monitoring System:

ECOLOG-NET LA8 and WA8 (wireless) 8-Channel Datalogger for 4..20mA Signals

LAN Part No. : 2720; WLAN Part No. : 2722

Capable of monitoring virtually any given sensor, as long as it has a 4-20 mA standard signal.

Program the sensor to the user units and see data in the online monitor and in the evaluation Software

Monitor any physical unit as

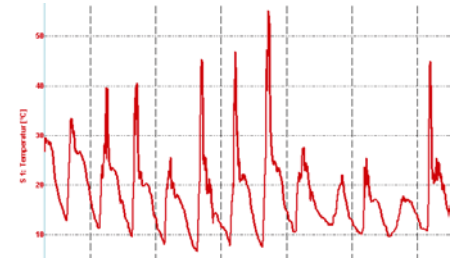
- Humidity / temperature
- Differential pressure
- Pressure, atmospheric pressure
- CO₂, O₂, other gases
- Light
- etc.

Long cables to the sensors (up to some hundred meters)

Power supply of all sensors through the datalogger

Specifications:

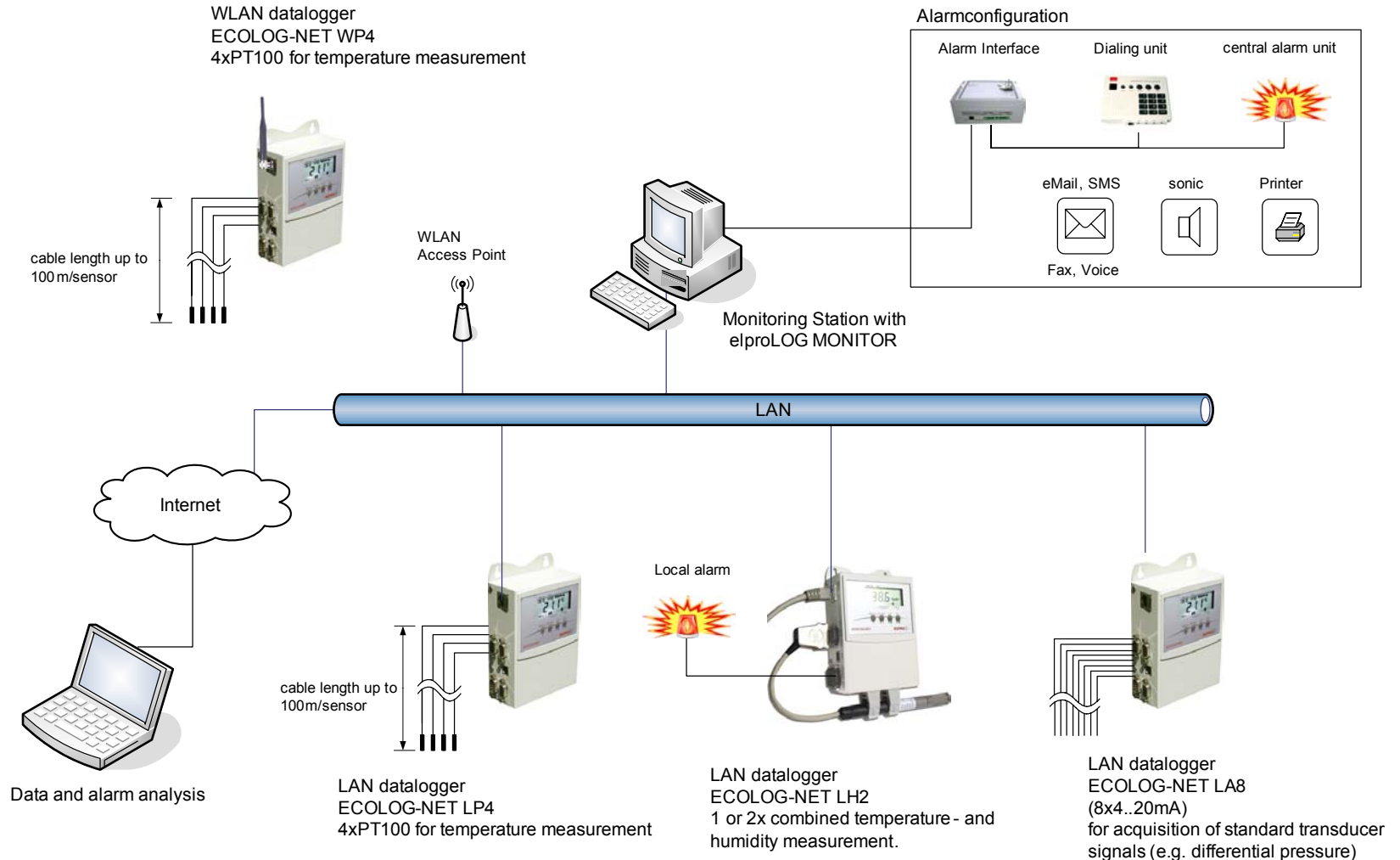
- 64,000 data points, freely programmable
- Display of measured value, date, time, alarm, battery, status information
- Keypad for scroll of display and test functions
- 8 Channel input for 4-20mA; programmable axis to user units
- 2 digital input for external start, alarm delay, alarm reset, marking
- Multifunction alarm output: LAN, LCD, buzzer, local connection
- Operating temperature range -35°C to +55°C (datalogger only)
- Dimensions (L x H x D, without external sensors) 160x110x50 mm
- Weight (dependent on type and sensors) approx. 0.6 kg
- Voltage supply: 1 lithium battery 3.6 VDC for autonomous datalogging
- External power supply 10VDC to 30V DC (e.g. 24V sensor supply)
- Power supply to sensors, 2-wire or 3-wire system
- Long sensor cables, up to some 100 meters (depending to sensor used)
- LAN / W-LAN Network port Ethernet TCP/IP or USB



Software and network compatibility:

- Fully integrated in the elproLOG network software package:
 - Digiconnect to program IP address to device and search
 - elproLOG Config to set up a network system
 - elproLOG Monitor to show online data and trigger Alarm
 - elproLOG Evaluation for detailed data evaluation, available for GLP / GMP
- LAN and WLAN (wireless) Ethernet compatibility
- Fits into the central monitoring system

Monitoring over the LAN / WLAN Network



Accessories for the Ecolog-Net LA8

rH/T Sensors for warehouse and incubator monitoring



Humidity and temperature
-40°..+60° and 0%..100%rH
M12 socket / connector 4 pins

For warehouse and room
monitoring

Part No: 3310-T02



Humidity and temperature
-40°..+60° and 0%..100%rH
M12 socket / connector 4 pins

For chamber and Incubator
monitoring

Part No: 3315-T02



Optional shield for outside
monitoring of temperature
and humidity

Converters for Temperature and Pressure Sensors:

Converter for all ML PT100 sensors; PT100 to 4-20mA using the M12 / 4-pin connector, programmable range

Part No: 3350-A



Differential pressure sensor
Precision: $\pm 2.5\%$ FS
4-20mA; -50...+50Pa

Part No: 3260-L



Differential pressure sensor
Precision: ± 1.5 Pa
Various types available

Part No: 3260-T



Precision differential pressure sensor
 ± 20 Pa or ± 100 Pa

Example:

Part No: 3259-B (± 20 Pa)

Precision: <4 Pa: 0.05 Pa
 >4 Pa: 1.5%

Converters for CO₂ Gas, Flow, Pressure, Water level:

Air quality

CO₂ transmitter 0..2000ppm,
0..10V / 4..20mA

Part No: 3271-F



Monitoring in incubators: 0%..20% CO₂



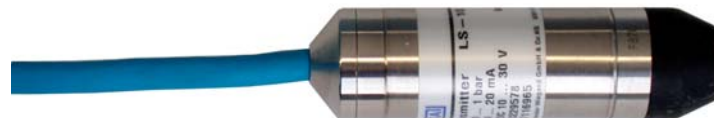
Air or water flow monitoring

Speed 0.3..20m/s. (4 - 20 mA); Part No: 3264-B



Pressure, any range and size

-1..9 bar Size G 1/4", 4..20mA; Part No: 3280-A



Water level monitoring

Level sensor D= 0..10 meters, 4..20mA; Part No: 3263-C

Applications for the LA8 Datalogger

CLEAN ROOMS



Grey Rooms

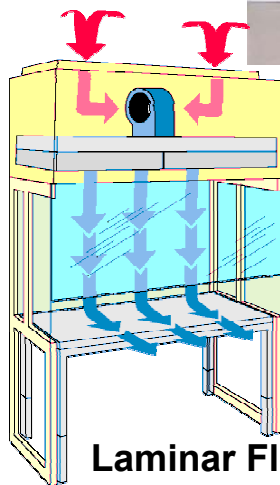


Technical Area

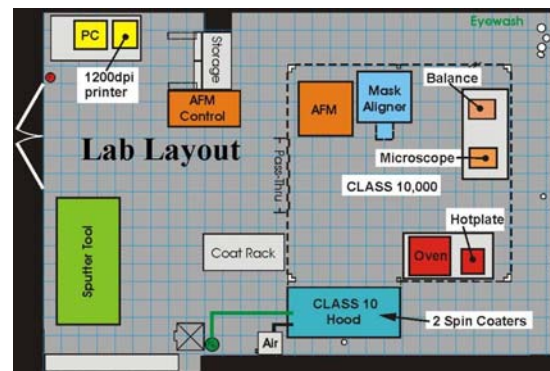


Monitoring of:

Temperature; Humidity
Differential Pressure
Particles
Gases



Laminar Flow Cabinets



Applications for the LA8 Datalogger



Warehouses

**Storage Rooms
Production Rooms**

Monitoring of:

Temperature; Humidity
Differential Pressure
Light
Gases



Shopping Malls

